

Tehnička podrška

Ako vam je potrebna pomoć, obratite se tvrtki Reolink prije nego što vratite svoj proizvod. Na većinu pitanja odgovore možete pronaći na našim mrežnim stranicama za podršku na <https://support.reolink.com>.

<https://reolink.com>

<https://support.reolink.com>



PoE IP kamera

Upute za uporabu

Sadržaj

Sadržaj kutije	1
Kako napajati kameru	2
Dijagram spajanja kamere	3
Postavke kamere u Reolink App za mobilne uređaje	4
Postavke kamere u Reolink Client na računalima	6
Kako prilagoditi smjer kamere	7
Rješavanje problema	9
Tehnički podaci	10
Izjave o sukladnosti	10

Sadržaj kutije

PoE kamera x1	Uputstva x1
Vodootporni poklopac x1	Predložak za bušenje rupa x1
1m mrežnog kabela x1	Vijci x1
Nadzorni znak x1	Napajač x1 (samo za RLC-423)

Kako napajati kameru

Napajanje pomoću Reolink PoE NVR snimača

Spojite svoju IP kameru na Reolink PoE NVR snimač s jednim mrežnim kabelom i tada će se kamera napajati putem PoE NVR snimača.

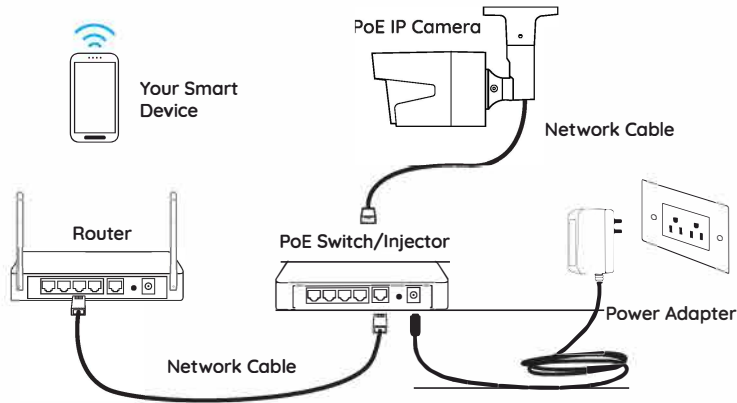
Napajanje pomoću napajaača

- Za Reolink RLC-423 i RLC-423S kamere, napajač mora biti DC 12V 2A.
- Za ostale Reolink PoE modele kamera, napajač može biti DC 12V 1A.

Napajanje pomoću PoE Injector/Switch-a

- Za Reolink RLC-423 i RLC-423S morate koristiti PoE Injector/Switch sukladan 802.3at (48V) standardu i podržava aktivni način rada.
- Za ostale modele Reolink PoE kamera morate koristiti PoE Injector/Switch sukladan 802.3af (48V) standardu i podržava aktivni način rada.

Dijagram spajanja kamere



For the initial setup, please follow the steps below to connect your camera.


1. Connect the camera to your PoE switch/injector via the Ethernet cable.
2. Connect the PoE switch/injector to your router, and then power on the PoE switch/injector.

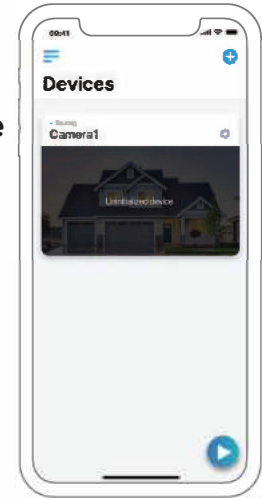
Set up the Camera on Reolink App (For Smartphone)

Download and install the Reolink App on App Store (for iOS) or Google Play (for Android).



• Add the Camera in the Same Network (In LAN)

1. Connect your smartphone to the Wi-Fi network of your router.
2. Launch Reolink App. The camera will automatically display in the camera list in LAN.
3. Tap screen to create a login password and name your camera.
4. Start live view or go to “” for more configurations.



• Add the Camera in Different Network or Using Cellular Data (In WAN)

1. Click “+” on the upright corner.
2. Scan the QR code on the camera, and then start to initialize the device.
3. Create a login password, name your camera, and then start live view.

☰ Menu

+ Add New Device

⚙ Device Settings

▶ Access the Live View



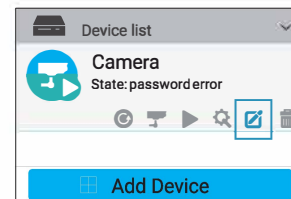
Set up the Camera on Reolink Client (For PC)

Please download and install the Reolink Client software from our official website: <https://reolink.com/software-and-manual/>.

• Add the Camera in the Same Network (In LAN)

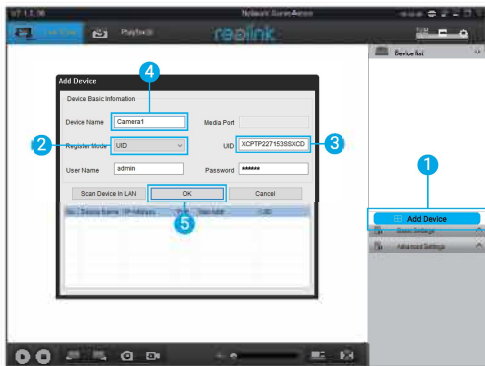
1. Connect your computer to the same router which the camera is connected to.
2. Launch Reolink Client. The camera will automatically display in the device list in LAN.

NOTICE: If you've created the password for your camera on Reolink App, please click the “✍” button to enter the correct password to log in.



• Add the Camera in Different Network (In WAN)

1. Click “Add Device” on the right-side menu.
2. Choose “UID” as the Register Mode.
3. Type in the UID of your camera.
4. Create a name for the camera displayed on Reolink Client.
5. Input the password created on Reolink App to log in.
6. Click “OK” to log in.



How to Adjust the Camera's Direction

• For PoE Bullet Cameras

1. Twist the screws with the wrench, and then adjust the camera in any direction.



2. After adjustment, twist the screws back to mount the camera firmly.

• For PoE Dome Cameras



Manually rotate the camera body to adjust the surveillance angle.

Troubleshooting

IP Cameras Are Not Powering On

If you find your camera is not powering on, try the following solutions:

- Please make sure your camera is powered properly. The camera should be powered by a PoE switch/injector, the Reolink NVR or a 12V power adapter.
- If the camera is connected to a PoE device such as a switch/injector/Reolink NVR, please plug the camera to another PoE port and see whether the camera will power on.
- Try another Ethernet cable.
- If the issue isn't fixed, please contact Reolink support team.

IR LEDs Stop Working

If you find the IR LEDs of your camera stop working, try the following solutions:

- Go to Device Settings and check whether you have enabled Infrared lights. If the LEDs are disabled, please enable them.
- Please go to Live View and check the Day/Night mode, set the mode to Auto to activate the IR lights.
- Upgrade your camera's firmware to the latest version.
- Restore the camera to the factory settings, and check the IR light settings again.
- If the issue is still not fixed, please contact Reolink support team.

Fail to Upgrade the Firmware

If you fail to upgrade the firmware for the camera, try the following solutions:

- Confirm the current firmware

version of the camera.

- Make sure the firmware you downloaded in the download center is the correct one.
- Make sure the network of your computer is smooth.

Specifications

Hardware Features

IR Distance: 30 Meters (100ft) (60 Meters only for RLC-423)
Day/Night Mode: Auto Switchover

General

Operating Temperature: -10° to 55° C (14° to 131° F)
Operating Humidity: 10%-90%
Ingress Protection: IP66

Notification of Compliance

FCC Compliance Statement

This device complies with Part 15 of FCC Rules. Operation is subject to the following two conditions: (1) this device may not cause harmful interference, and (2) this device must accept any interference received, including interference that may cause undesired operation. For more information, visit:

<https://reolink.com/fcc-compliance-notice/>.

Simplified EU Declaration of Conformity

Reolink Communications declares that this device is in compliance with the essential requirements and other relevant provisions of Directive 2014/53/EU.



Correct Disposal of this product

This marking indicates that this product should not be disposed with other household wastes

throughout the EU. To prevent possible harm to the environment or human health from uncontrolled waste disposal, recycle it responsibly to promote the sustainable reuse of material resources.

To return your used device, please use the return and collection systems or contact the retailer where the product was purchased. They can take this product for environmentally safe recycling.

Limited warranty

This product comes with a 2-year limited warranty that is valid only if purchased from Reolink Official Store or a Reolink authorized reseller. Learn more:

<https://reolink.com/warranty-and-return/>.

Terms and Privacy

Use of the product is subject to your agreement to the Terms of Service and Privacy Policy at reolink.com.

Keep out of reach of children.

End User License Agreement

By using the Product Software that is embedded on the Reolink product, you agree to the terms of this End User License Agreement ("EULA") between you and Reolink. Learn more: <https://reolink.com/eula/>.