



WiFi IP Camera

# Upute za uporabu

## Sadržaj

Sadržaj kutije	1
Uvod	2
Dijagram spajanja kamere	3
Postavke kamere u Reolink App za mobilne uređaje	4
Postavke kamere u Reolink Client na računalima	5
Kako prilagoditi smjer kamere	8
Rješavanje problema	9
Tehnički podaci	9
Izjave o sukladnosti	10

## Sadržaj kutije

WiFi IP kamera x1	Nadzorni znak x1
Antena x2	Uputstva x1
Napajač x1	Predložak za bušenje rupa x1
1m mrežnog kabela x1	Vijci x1
4.5m kabela za napajanje x1	

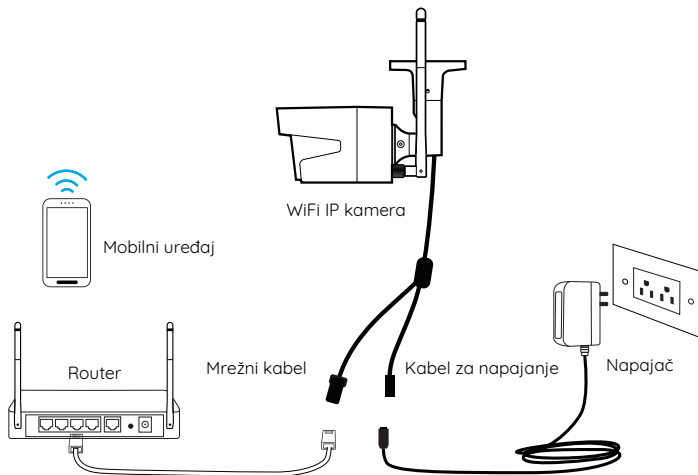
## Uvod

Antena	
Nosač	
Metalno kućište	
IR LED	
Objektiv	
Senzor dnevnog svjetla	
Mrežni kabel	
Gumb za reset	
Pritisnite više od 10 sekundi za vraćanje uređaja na tvorične postavke	
Kabel za napajanje	



Antena  
Nosač  
Metalno kućište  
IR LED  
Objektiv  
Senzor dnevnog svjetla

## Dijagram spajanja kamere



For the initial setup, please follow the steps below to connect your camera.

1. Connect the camera to your router LAN port with an Ethernet cable.
2. Connect the camera to the power adapter via the power cable.

## Set up the Camera on Reolink App (For Smartphone)

Download and install the Reolink App on App Store (for iOS) or Google Play (for Android).

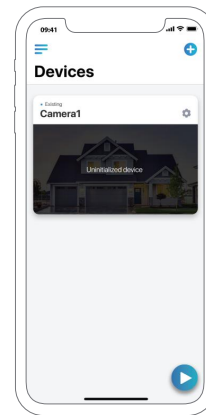


### • Add the Camera in the Same Network

1. Connect your smartphone to the Wi-Fi network of your router.
2. Launch Reolink App. The camera will automatically display in the camera list in LAN.
3. Tap the camera on the screen, follow the steps to create a login password, name your camera and set up Wi-Fi.

**NOTICE:** You can also set up Wi-Fi for your camera in Device Settings-> Wi-Fi.

4. Start live view or go to "Device Settings" for more configurations.




## Set up the Camera on Reolink Client (For PC)

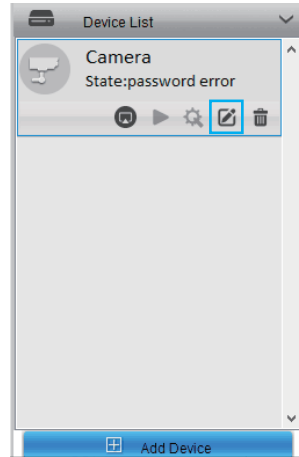
Please download and install the Reolink Client software from our official website:<https://reolink.com/software-and-manual/>.

### • Add the Camera in the Same Network

1. Connect your computer to the same router which the camera is connected to.
2. Launch Reolink Client. The camera will automatically display in the device list in LAN.

#### NOTICE:

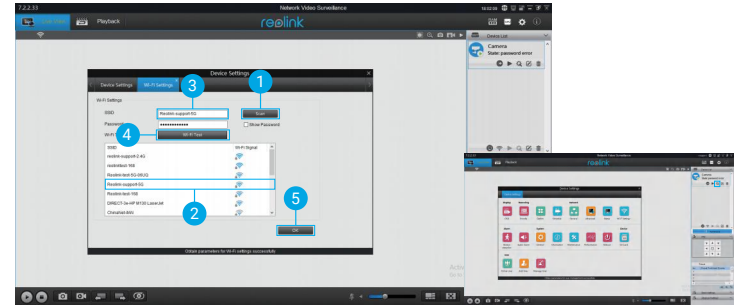
If you've created the password for your camera on Reolink App, please click the  button to enter the correct password to log in.



### • WiFi Settings

Click the “Device Settings” button, and go to Network -> Wi-Fi Settings.

1. Scan the SSID.
2. Double click the SSID which you choose. Enter the password.
3. Click “Wi-Fi Test” to test the password.
4. Wi-Fi Test
  - a) If the Wi-Fi test succeeds, please go to step 5.
  - b) If the Wi-Fi Test fails, please check your Wi-Fi password and the network connection, and then try again.
5. Click “OK”.
6. Remove the Ethernet cable and you can access the camera via Wi-Fi on the computer now.

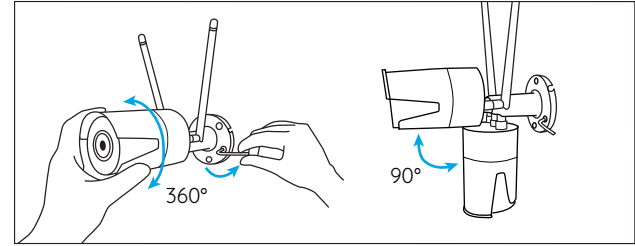


## • Add the Camera in Different Network

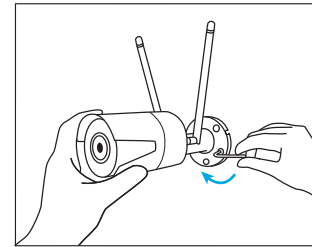
1. Click “Add Device” on the right-side menu.
2. Choose “UID” as the Register Mode.
3. Type in the UID of your camera.
4. Create a name for the camera displayed on Reolink Client.
5. Input the password created on Reolink App to log in.
6. Click “OK” to log in.



## How to Adjust the Camera's Direction



- Step 1  
Twist the screws with the wrench and adjust the camera in any direction.



- Step 2  
After adjustment, twist the screws back to mount the camera firmly.

## Troubleshooting

### • IP Cameras Are Not Powering On

If you find your camera is not powering on, try the following solutions:

- Please check whether the outlet is working properly or not. Try to plug the camera into a different outlet and see whether the camera works.
- Please check whether the DC adapter is working or not. If you have another 12V DC power adapter which is working, please use another power adapter and see whether it works.
- If the issue isn't fixed, please contact Reolink support team.

### • IR LEDs Stop Working

If you find the IR LEDs of your camera stop working, try the

following solutions:

- Go to Device Settings and check whether you have enabled Infrared LEDs. If the LEDs are disabled, please enable them.
- Please go to Live View and check the Day/Night mode, set the mode to Auto to activate the IR lights.
- Upgrade your camera's firmware to the latest version.
- Restore it to the factory settings, and check the IR light settings again.
- If the issue is still not fixed, please contact Reolink support team.

### • Fail to Upgrade the Firmware

If you fail to upgrade the firmware for the camera, try the following solutions:

- Confirm the current firmware version of the camera.
- Make sure the firmware you

download in the download centre is the correct one.

- Make sure the network of your computer is smooth.

## Specifications

### Hardware Features

IR Distance: 30 Meters (100ft)

Day/Night Mode: Auto Switchover

### General

Operating Temperature: -10° to 55° C (14° to 131° F)

Operating Humidity: 10%-90%

Weather resistance: IP66 waterproof

## Notification of Compliance

### FCC Compliance Statement

This device complies with Part 15 of FCC Rules. Operation is subject to the

following two conditions: (1) this device may not cause harmful interference, and (2) this device must accept any interference received, including interference that may cause undesired operation. For more information, visit:

<https://reolink.com/fcc-compliance-notice/>.

### Simplified EU Declaration of Conformity

Reolink declares that this device is in compliance with the essential requirements and other relevant provisions of Directive 2014/53/EU.



### Correct Disposal of This Product

This marking indicates that this product should not be disposed with other household wastes throughout the EU. To prevent possible harm to the environment

or human health from uncontrolled waste disposal, recycle it responsibly to promote the sustainable reuse of material resources. To return your used device, please use the return and collection systems or contact the retailer where the product was purchased. They can take this product for environmentally safe recycling.

### Limited Warranty

This product comes with a 2-year limited warranty that is valid only if purchased from Reolink Official Store or a Reolink authorized reseller. Learn more: <https://reolink.com/warranty-and-return/>.

### Terms and Privacy

Use of the product is subject to your agreement to the Terms of Service and Privacy Policy at [reolink.com](https://reolink.com). Keep out of the reach of children.

### End User License Agreement

By using the Product Software that is embedded in the Reolink products, you agree to the terms of this End User License Agreement (“EULA”) between you and Reolink. Learn more: <https://reolink.com/eula/>.

### ISED Radiation Exposure Statement

This equipment complies with RSS-102 radiation exposure limits set forth for an uncontrolled environment. This equipment should be installed and operated with minimum distance 20cm between the radiator & your body.

**OPERATING FREQUENCY** (the maximum transmitted power)  
2412MHz–2472MHz (19dBm)  
5180 MHz -5320 MHz(18dBm)  
5745 MHz -5825 MHz (18dBm)